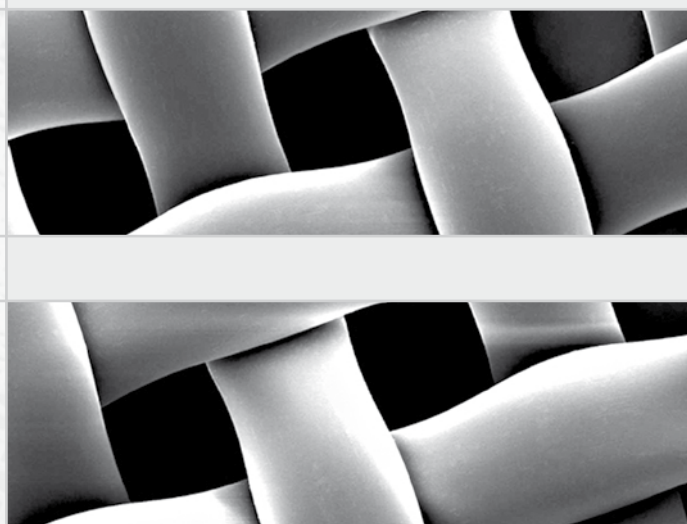


swiss
mesh
technology



The right mesh for each
screen printing application



Printing Solutions
Mesh selection

S E F A R
■ ■ ■ ■

SEFAR® PET 1500

High-quality printing results
for professional demands



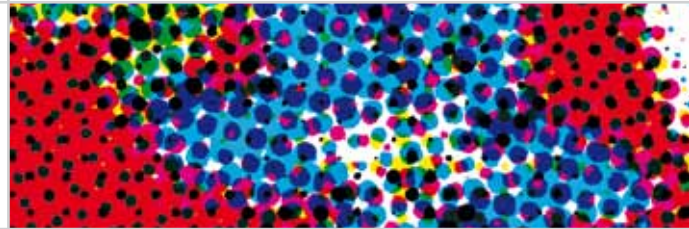
SEFAR® PME

Precision mesh for high-end
industrial screen printing



SEFAR® LFM

The screen printing mesh that meets
the highest demands



SEFAR® PA 1000

The special mesh for printing
on solid objects and tiles



SEFAR® PreCoated Fabrics

Precoated screen printing mesh for industrial use



Recommendations for the selection of mesh for screen printing

Applications	Recommendation				Alternative				PreCoated Fabrics			
	Conventional inks from to		UV-inks from to		Conventional inks from to		UV-inks from to		Conventional inks from to		UV-inks from to	
Graphics	SEFAR® LFM				SEFAR® PET 1500							
Large format												
Line work			140/355-32	150/380-32	90/230-40	120/305-34	140/355-34	165/420-31				
Varnish			140/355-32	150/380-32	90/230-40	120/305-34	140/355-34	180/460-31				
Half-tones up to 28 L/cm			140/355-32	150/380-32	120/305-34	140/355-31	140/355-31	180/460-31				
Graphics	SEFAR® PET 1500								SEFAR® PCF			
Line work	90/230-40	120/305-34	140/355-31	165/420-27								
Varnish	90/230-40	120/305-34	140/355-31	180/460-27								
Half-tones up to 28 L/cm	120/305-31	140/355-31	140/355-31	180/460-27								
Half-tones fom 28 L/cm to 54 L/cm	120/305-31	165/420-27	150/380-27	180/460-27								
Label Printing (reel to reel)			120/305-31	180/460-27							120/305-31	180/460-27
Glitter	32/83-70		32/83-70									
CityLight	SEFAR® LFM				SEFAR® PET 1500							
Backlit panels												
Line work			140/355-32	150/380-32	90/230-40	120/305-34	140/355-34	165/420-27				
Varnish			140/355-32	150/380-32	120/305-31	140/355-31	140/355-34	180/460-27				
Half-tones up to 28 L/cm			140/355-32	150/380-32	140/355-31	165/420-27	150/380-27	180/460-27				
Half-tones fom 28L/cm bis 54 L/cm			140/355-32	150/380-32	140/355-31	165/420-27	150/380-31	180/460-27				
Optical Discs (CD / DVD)	SEFAR® PCF				SEFAR® PET 1500				SEFAR® PCF			
Areas			140/355-31	150/380-31			140/355-31	150/380-31			140/355-31	150/380-31
Lines			150/380-31	165/420-27			150/380-31	165/420-27			150/380-31	165/420-27
Multi colour printing			150/380-31	180/460-27			150/380-31	180/460-27			150/380-31	180/460-27
Half-tones			150/380-31	180/460-27			150/380-31	180/460-27			150/380-31	180/460-27
Electronics / PCB	SEFAR® PME				SEFAR® PET 1500				SEFAR® PCF			
Peelable solder mask					12/30-140	27/70-120						
Photosensitive solder mask					36/92-90	61/156-64						
Isolation lacquer / varnish					71/180-55	90/230-48	71/180-55	90/230-48				
Carbon-/ Silver-conductive paste					48/123-70	77/195-55						
Solder mask, 1-component												

(copper thickness up to 70µm)			100/255-35	120/305-35			68/175-55	120/305-34				120/305-34
Solder mask, 2-component (copper thickness 70µm and more)					43/110-80	54/137-64						
Etch-resist			120/305-35	150/380-30			120/305-34	150/380-31			120/305-34	150/380-31
Legend printing	100/255-35	150/380-30	100/255-35	150/380-30	100/255-40	140/355-31	100/255-40	150/380-31	120/305-34	140/355-31	120/305-34	150/380-31
Via-hole-filling / Plugging					12/30-140	48/123-70						
Heatsink					12/30-140	32/83-70						
Silver-Through-Hole STH					48/123-70	77/195-55						
Membrane switches	SEFAR® PME				SEFAR® PET 1500				SEFAR® PCF			
Insulation lacquer					71/180-55	90/230-48	71/180-55	90/230-48				
Silver conductive paste					48/123-70	77/195-55						
Adhesive							36/92-90	90/230-48				
UV structural lacquer			100/255-35	150/380-30			77/195-55	165/420-31			120/305-34	165/420-31
Graphic inks	110/280-35	150/380-30			90/230-48	120/305-34	140/355-31	165/420-31		120/305-34	140/355-31	165/420-31
Lacquer for transparent windows	110/280-35	150/380-30			110/280-34	150/380-34			120/305-34	150/380-34		
Credit cards	SEFAR® PME				SEFAR® PET 1500				SEFAR® PCF			
Lines and half-tones			100/255-35	150/380-30			71/180-55	150/380-31			120/305-34	150/380-31
Dashboards	SEFAR® PME				SEFAR® PET 1500				SEFAR® PCF			
Graphic inks	110/280-35	150/380-30			90/230-48	120/305-34	140/355-31	165/420-31		120/305-34	140/355-31	165/420-31
Lacquer for transparent windows	110/280-35	150/380-30			110/280-34	150/380-34			120/305-34	150/380-34		
Adhesive							36/92-90	90/230-48				
Ceramic tiles	SEFAR® PET 1500				SEFAR® PA 1000				SEFAR® PCF			
Glaze printing, coarse, embossed	8/20-300	21/54-140			10/25-350	24/60-160						
Glaze printing, medium to fine	21/54-140	61/156-64			24/60-160	61/156-70						
In- and underglaze colours (direct)	43/110-80	100/255-40			36/92-90	100/255-38						
On glaze / Decals												
■ Areas and lines	77/195-48	150/380-31	120/305-34	150/380-31	77/195-50	140/355-35			120/305-34	150/380-31	120/305-34	150/380-31
■ Half-tones and fine lines	100/255-40	165/420-31	140/355-31	180/460-27	100/255-38	165/420-30			120/305-34	165/420-31	140/355-31	180/460-27
Gold and lustre inks	120/305-34	180/460-27			120/305-35	180/460-30			120/305-34	180/460-27		
Covercoat / film solution	12/30-140	32/83-100										
Ceramic tiles, rotary screen printing	8/20-300	77/195-48										
Glass	SEFAR® PET 1500				SEFAR® PET 1500				SEFAR® PCF			
Automotive glass												
■ Black surrounds of windows (black ink)	61/156-64	77/195-48	90/230-48									
■ Antennas (silver paste)	77/195-48	100/255-40										
■ Heated rear wind screen (silver paste)	77/195-48											
■ Sun roofs	100/255-40	120/305-34								120/305-34		
Construction / Buildings												
■ Facades or front walls, doors	30/76-120	77/195-48										
■ Windows, shower cabins, mirrors	77/195-48	120/305-34								120/305-34		
Cosmetic bottles												
■ Colours	77/195-48	120/305-34								120/305-34		

■ Gold or platinum inks	120/305-34	150/380-31							120/305-34	150/380-31		
Pharma and Chemical industry												
■ Laboratory glasses, bottles, ampoules	77/195-48	165/420-27							120/305-34	165/420-27		
Beverages												
■ Bottles, drinking cups	51/131-80	120/305-34								120/305-34		
Household equipment												
■ Frontpanels masks	43/110-80	68/175-55										
■ Frontpanels contour / half-tones	77/195-48	100/255-40										
■ Ceramic hot plates	120/305-34	150/380-31							120/305-34	150/380-31		
Common glass decoration	77/195-48	140/355-31	140/355-31	180/460-27					120/305-34	140/355-31	140/355-31	180/460-27
Textiles	SEFAR® PET 1500				SEFAR® PET 1500				SEFAR® PET 1500			
Direct printing, T-shirt												
Flock direct (adhesive)	18/45-180	32/83-100										
Pigment dye, areas and lines	40/103-80	68/175-64										
Pigment dye, half-tones	61/156-64	77/195-48										
Pre-printing (plastisol)	32/83-100	48/123-55										
Plastisol transfer	36/92-100	120/305-34										
Plastisol direct	54/137-64	120/305-34										
Glitter	12/30-140	32/83-70										
Universal mesh	32/83-70	90/230-40										
Textiles	SEFAR® LFM				SEFAR® PET 1500				SEFAR® PET 1500			
Sublimation transfer printing												
Areas and half-tones	140/355-32	150/380-32			140/355-34	150/380-31						
Textiles	SEFAR® PET 1500				SEFAR® PET 1500				SEFAR® PET 1500			
Flatbed textile printing												
Heavy decor and furnishing fabrics												
■ Terry towel, denim	18/45-180	48/123-70										
Smooth fabrics												
■ Table cloths, heavy curtains	43/110-80	54/137-64										
Smooth and light materials												
■ Scarves, light curtains	54/137-64	77/195-48										
Smooth and light materials												
■ Synthetics	100/255-40	120/305-34										
Extremely light materials												
■ Special fine effects	77/195-48	120/305-34										
Objects	SEFAR® PET 1500				SEFAR® PA 1000				SEFAR® PCF			
Opaque inks, solids	100/255-40	120/305-34	140/355-31	150/380-31	100/255-38	150/380-30	140/355-30	200/510-30		120/305-34	140/355-34	150/380-31
Half-tones and fine lines	120/305-34	165/420-27	150/380-31	180/460-27	120/305-35	150/380-30	140/355-30	180/460-30	120/305-34	165/420-27	150/380-31	180/460-27

A strong partner that strengthens your customer relations.

www.sefar.com
printing@sefar.com

Headquarters:
Sefar AG
Hinterbissastrasse 12
9410 Heiden
Switzerland
Phone +41 71 886 32 32
Fax +41 71 886 35 00

Sefar Maissa S.A.
08440 Cardedeu (Barcelona), Spain
Phone +34 93 844 47 10
Fax +34 93 844 47 20

Sefar Inc.
Depew, New York 14043, USA
Phone +1 716 683 4050
Fax +1 716 685 9469

Sefar S.A. de C.V.
54080 Tlalnepantla, Estado de México, México
Phone +52 55 5394 8689
Fax +52 55 5319 0358

Sefar Printing Solutions Ltda.
09895-003 São Bernardo do Campo, Brazil
Phone +55 11 4390 6300
Fax +55 11 4390 6301

Sefar Asia Pacific Co. Ltd.
Bangkok 10900, Thailand
Phone +66 26 188 778
Fax +66 26 188 782

Sefar Printing Solutions (Shanghai) Co. Ltd.
Shanghai 201108, China
Phone +86 21 6442 6800
Fax +86 21 6442 6866

Sefar Trading (Shenzhen) Co. Ltd.
518048 Futian District Shenzhen, China
Phone +86 755 3398 3868
Fax +86 755 3398 3863

Sefar (International) AG
Kwai Fong N.T., Hong Kong
Phone +852 2650 0581
Fax +852 2638 0580

Sefar Printing Solutions Co. Ltd.
Osaka 530-0053, Japan
Phone +81 6 4709 1070
Fax +81 6 4709 1071

Sefar Pty Ltd
3043 Tullamarine, Victoria, Australia
Phone +61 3 9330 1122
Fax +61 3 9335 2592



As a **technology partner**, Sefar provides you with exclusive access to the latest findings and scientific/technological data that are constantly emerging as the result of our research and development.



As a professional **application technology partner**, Sefar offers you all-round advice and experience – at your premises, through individual training or at one of our Sefar Technical Centers.



Sefar is your technically expert **problem-solver** always on hand, everywhere, with helpful information and practical tips.



Your **market partner** with a global presence. Sefar operates on every continent, in over 100 countries, offering its customers a worldwide network of subsidiaries (with their own stencil production), sales companies and selected sales partners.



With Sefar, you're backing the dynamic **market leader** for innovative and technically perfect industrial screen printing solutions.

1021 EN 11/2010

Waver: It is exclusively in written agreements that we provide our customers with warrants and representations as to the technical contained specifications and/or the fitness for any particular purpose. The facts and figures herein are carefully compiled to the best of our knowledge, but they are intended for general informational purposes only.

Current data available on www.sefar.com